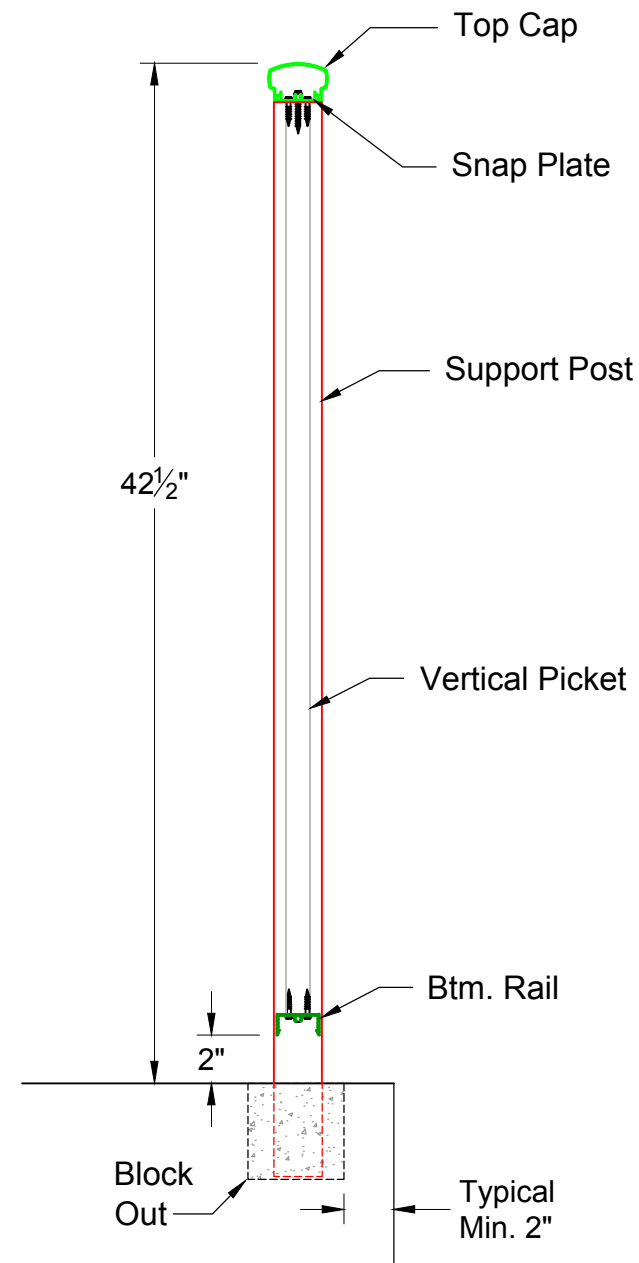
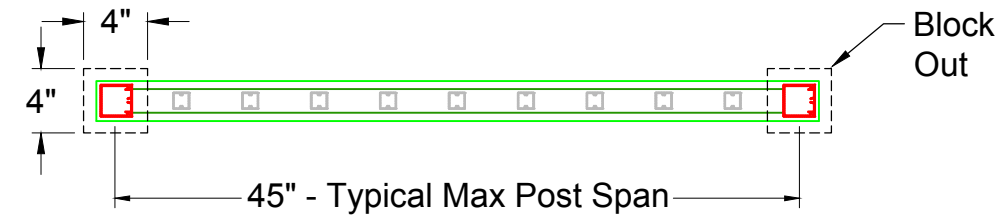


Material List:

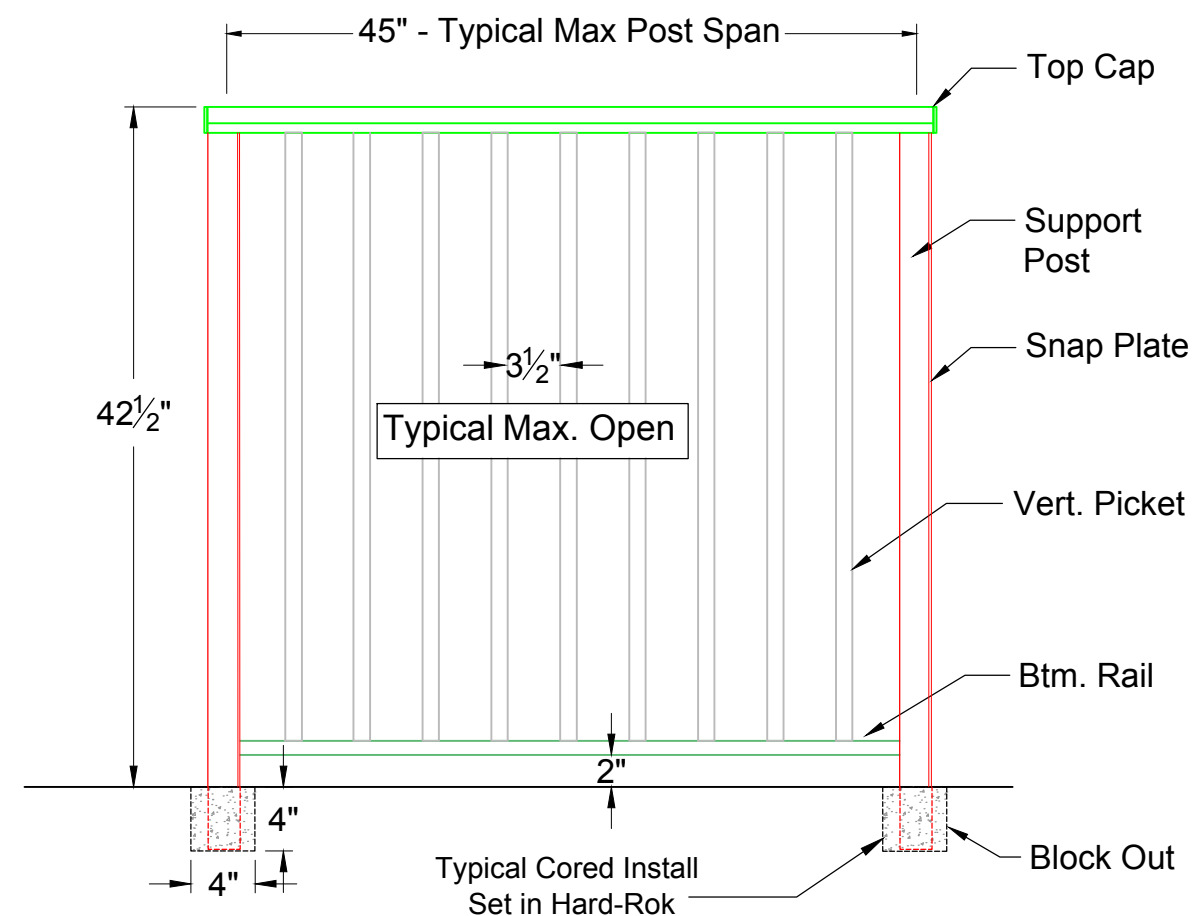
2-1/2" x 1-5/8" x .070"	6061-T6 HR-1	Top Cap (Shown)
1-13/16" x .070"	6061-T6 HR-2	Snap Plate
2" x 2" x .070"	6061-T6 HR-4	Support Post
1" x 1" x .050"	6061-T6 HR-5	Vertical Picket
1-13/16"x7/8"x.070"	6061-T6 HR-3	Bottom Rail
3/8" Thick	Alum. Casting	Base Plates (Option)



ENLARGED SECTION 1 1/2" = 1' - 0"



PLAN VIEW 1" = 1' - 0"



ELEVATION 1" = 1' - 0"

Dimensions and Components may vary based on Site Specific Engineering

All rights reserved and are the property of Mullet's Aluminum Products, Inc. No part of the materials may be copied, photocopied, reproduced, translated or reduced to any electronic medium or machine-readable form, in whole or in part, without prior written consent of Mullet's Products, Inc. All materials are protected by United States Copyright Law.

Customer: **MULLET'S ALUMINUM**

Project Name: **MECHANICAL RAIL**

Date: May. 23, 19

Drawn By: Nick, L.

Scale: AS NOTED

Page: (1)

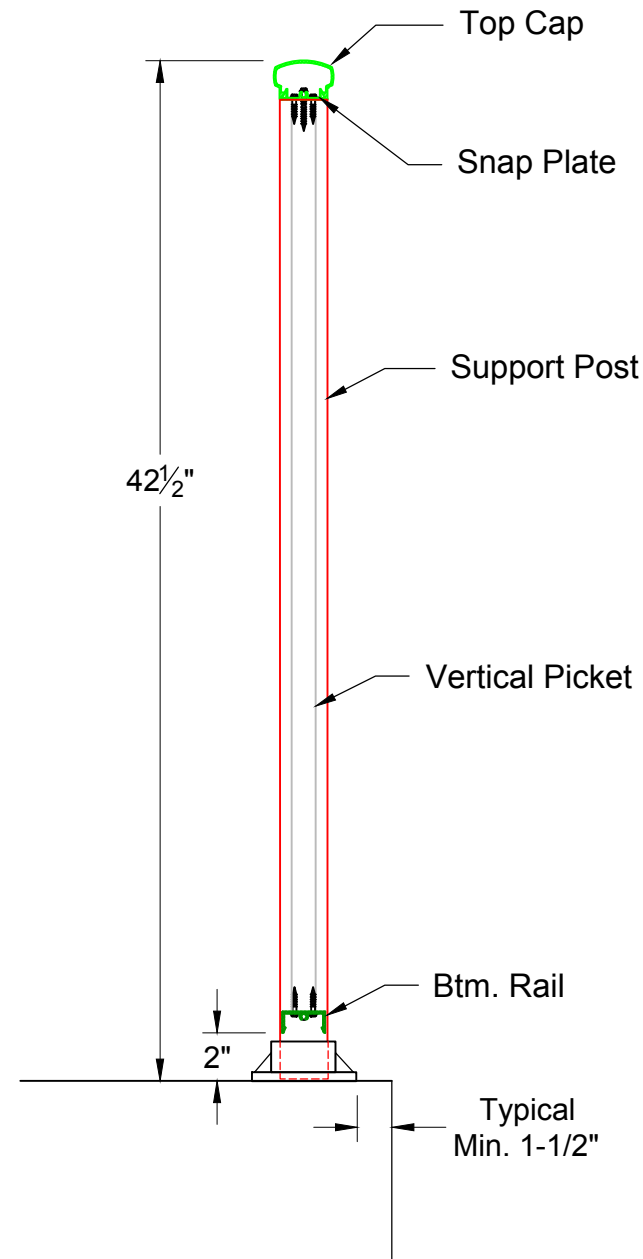
Drawing Description: MVRS - 100 Typ. Core Mount



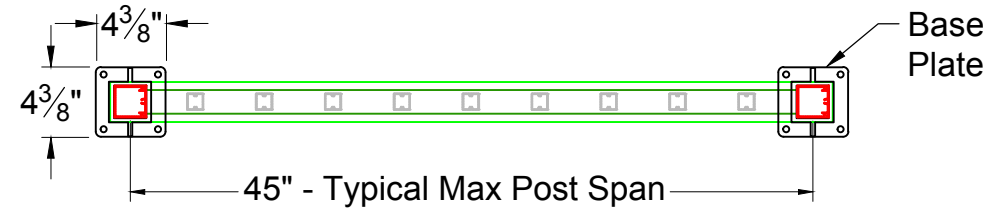
6345 McIntosh Road
Sarasota, FL 34238
Office # (941) 371-3502
Fax # (941) 378-5676

Material List:

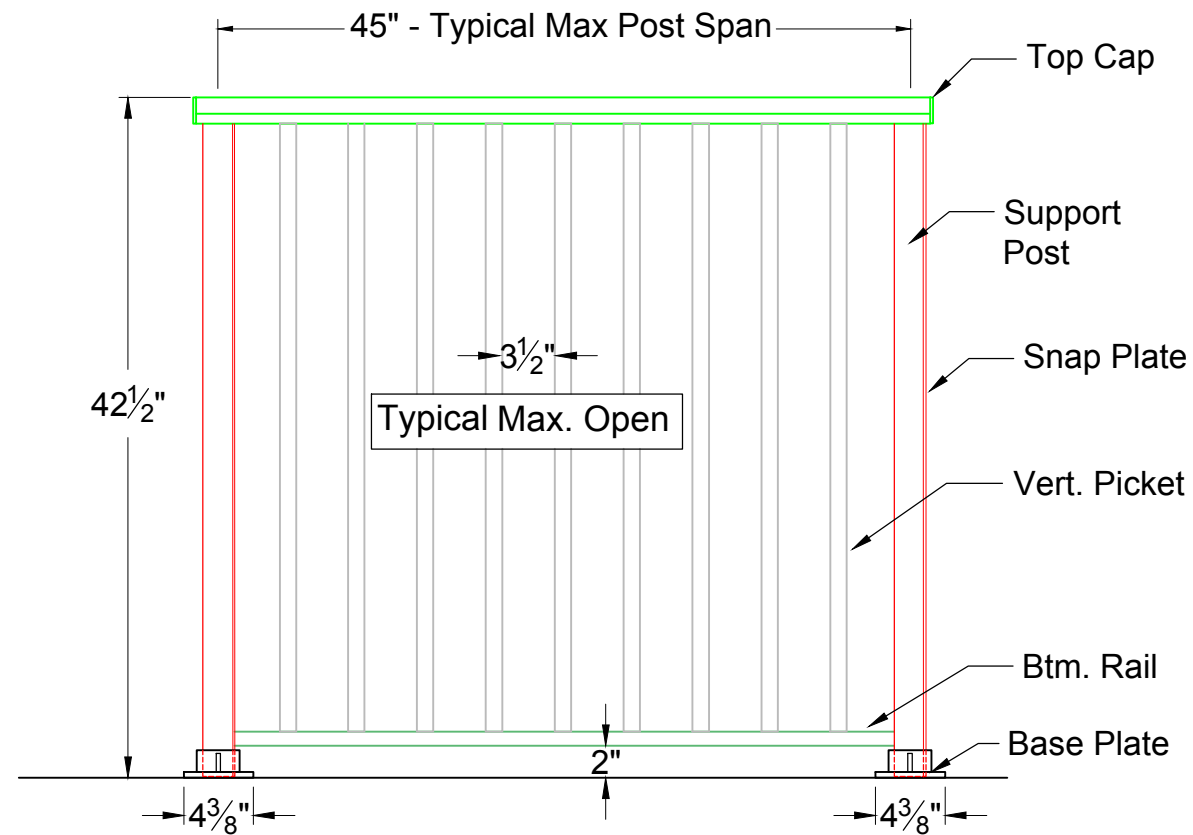
2-1/2" x 1-5/8" x .070"	6061-T6 HR-1	Top Cap (Shown)
1-13/16" x .070"	6061-T6 HR-2	Snap Plate
2" x 2" x .070"	6061-T6 HR-4	Support Post
1" x 1" x .050"	6061-T6 HR-5	Vertical Picket
1-13/16"x7/8"x.070"	6061-T6 HR-3	Bottom Rail
3/8" Thick	Alum. Casting	Base Plates (Option)



ENLARGED SECTION 1 1/2" = 1' - 0"



PLAN VIEW 1" = 1' - 0"



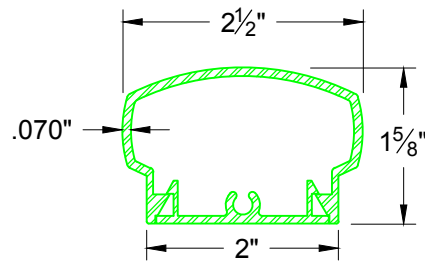
ELEVATION 1" = 1' - 0"

Dimensions and Components may vary based on Site Specific Engineering

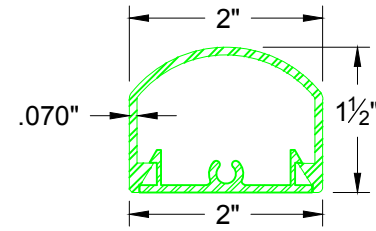
All rights reserved and are the property of Mullet's Aluminum Products, Inc. No part of the materials may be copied, photocopied, reproduced, translated or reduced to any electronic medium or machine-readable form, in whole or in part, without prior written consent of Mullet's Products, Inc. All materials are protected by United States Copyright Law.

Date:	Customer:
May. 23, 19	MULLET'S ALUMINUM
Drawn By:	Project Name:
Nick, L.	MECHANICAL RAIL
Scale:	Drawing Description:
AS NOTED	MVRS - 100 Opt. Plate Mount
	Page: (2)

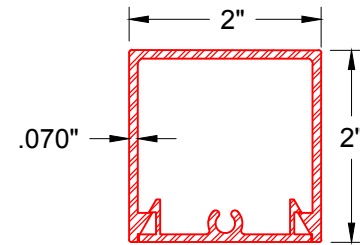
MULLET'S ALUMINUM PRODUCTS INC.
WELDING FABRICATION DEPT.
6345 McIntosh Road Office # (941) 371-3502
Sarasota, FL 34238 Fax # (941) 378-5676



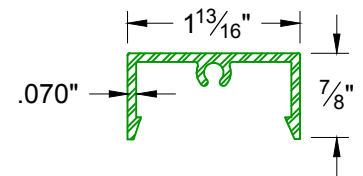
TOP CAP (SHOWN)
HR-1 MUSHROOM



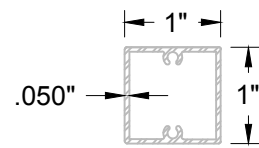
TOP CAP OPTION
HR-14 Half Round



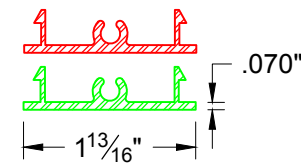
SUPPORT POST



BOTTOM CHANNEL



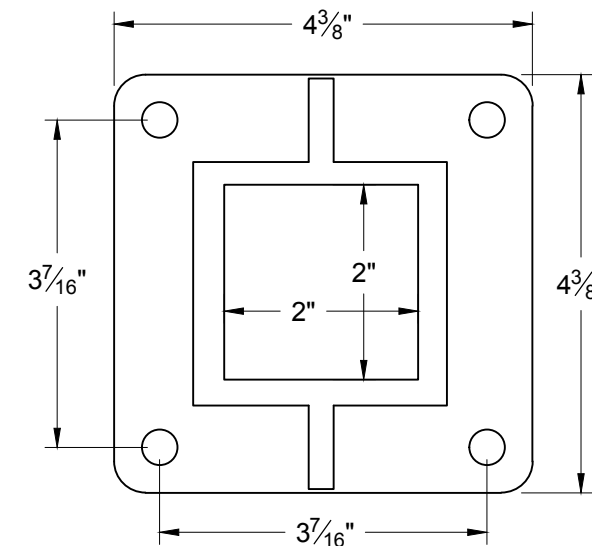
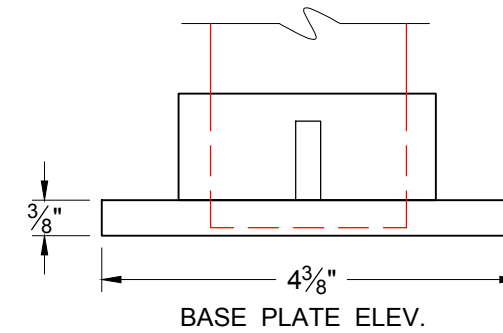
VERTICAL PICKET



TOP CAP , POST
or BTM. CHAN.
SNAP PLATE

Material List:

2-1/2" x1-5/8" x.070"	6061-T6 HR-1	Top Cap (Shown)
1-13/16" x .070"	6061-T6 HR-2	Snap Plate
2" x 2" x .070"	6061-T6 HR-4	Support Post
1" x 1" x .050"	6061-T6 HR-5	Vertical Picket
1-13/16"x7/8"x.070"	6061-T6 HR-3	Bottom Rail
3/8" Thick	Alum. Casting	Base Plates (Option)



(BASE PLATE OPTION SUBJECT TO ENGINEERING)

All rights reserved and are the property of Mullet's Aluminum Products, Inc. No part of the materials may be copied, photocopied, reproduced, translated or reduced to any electronic medium or machine-readable form, in whole or in part, without prior written consent of Mullet's Products, Inc. All materials are protected by United States Copyright Law.

Customer: **MULLET'S ALUMINUM**

Project Name: **MECHANICAL RAIL**

Drawing Description: **MVRS - 100 Component List** Page: **(3)**

Date: **May. 23, 19**

Drawn By: **Nick, L.**

Scale: **N.T.S.**



6345 McIntosh Road Office # (941) 371 - 3502
Sarasota, FL 34238 Fax # (941) 378 - 5676

Dimensions and Components may vary based on Site Specific Engineering