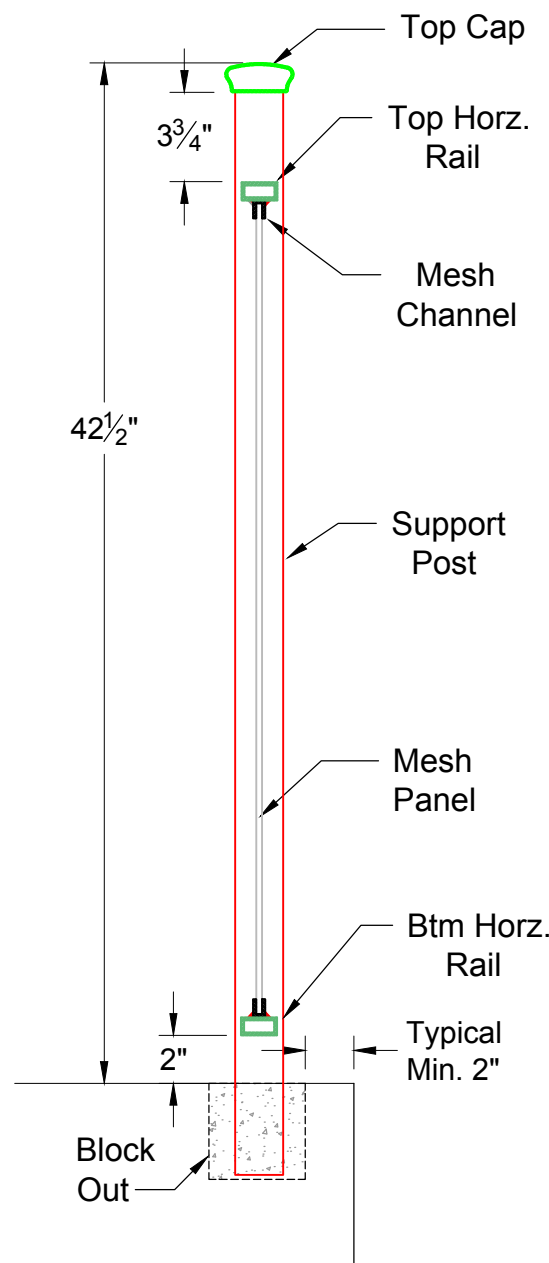
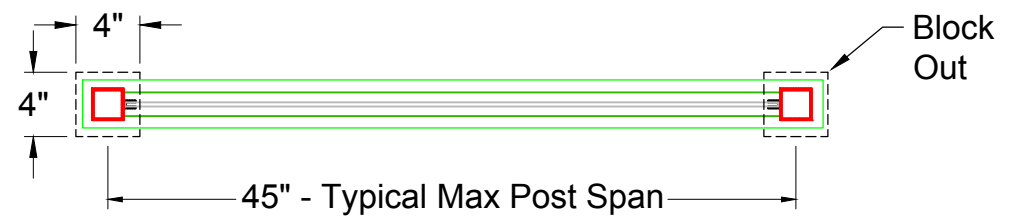


Material List:

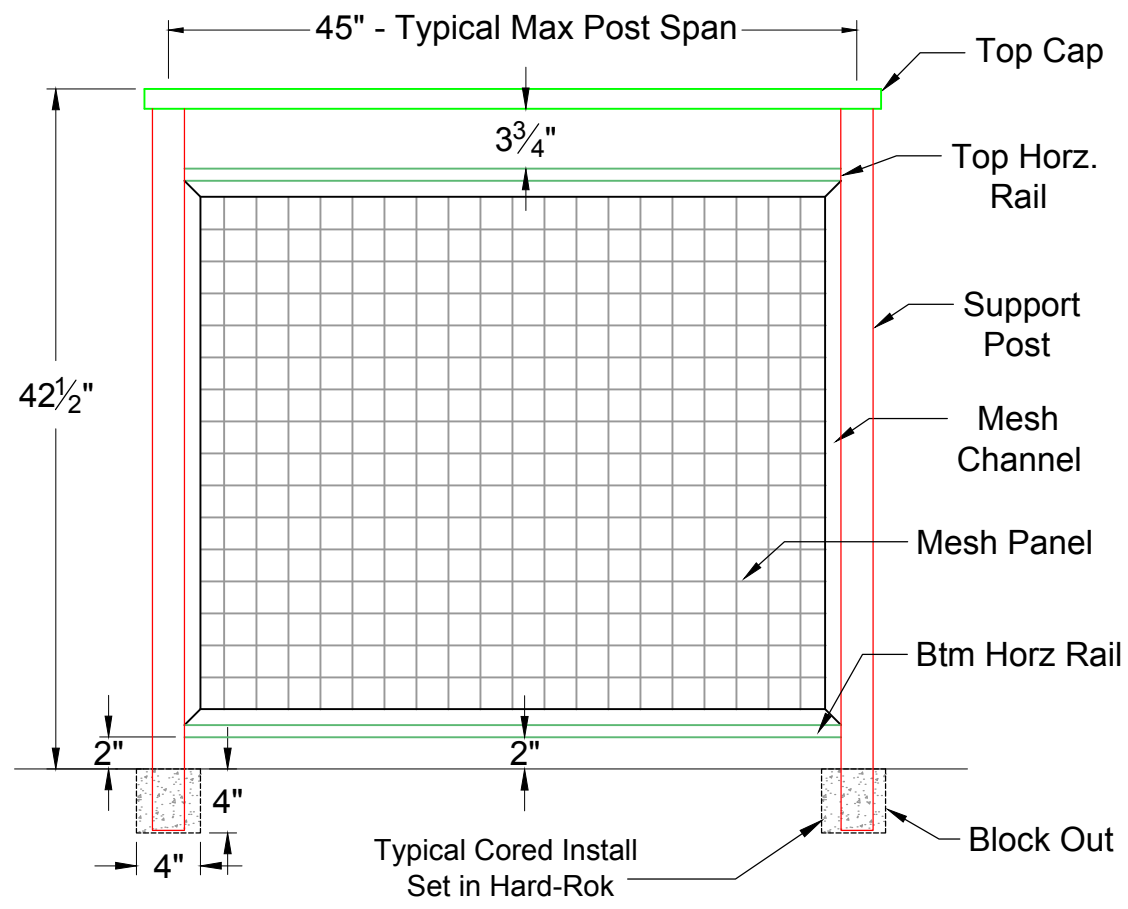
2-7/8" x 1-1/4"	6063-T52 # 133	Top Cap (Shown)
3/4" x1-1/2" x1/8"	6063-T52 Rect. Tube	Top Horiz. Rail
2" x 2" x 1/8"	6061-T6 Sq. Tube	Support Posts
3/4" x1-1/2" x1/8"	6063-T52 Rect. Tube	Bottom Rail
3/4"x1/2"x1/8"	6063-T52 Channel	Mesh Channel
1/4" Wire	6063-T52 Crimp Lock	2" SQ. C.L. Mesh Panel
1/4" Wire	6063-T52 Crimp Lock	Various Opening (Option)
5" x 5" x 3/8"	6061-T6 CNC Cut	Base Plate (Option)



ENLARGED SECTION 1 1/2" = 1' - 0"



PLAN VIEW 1" = 1' - 0"



ELEVATION 1" = 1' - 0"

Dimensions and Components may vary based on Site Specific Engineering

All rights reserved and are the property of Mullet's Aluminum Products, Inc. No part of the materials may be copied, photocopied, reproduced, translated or reduced to any electronic medium or machine-readable form, in whole or in part, without prior written consent of Mullet's Products, Inc. All materials are protected by United States Copyright Law.

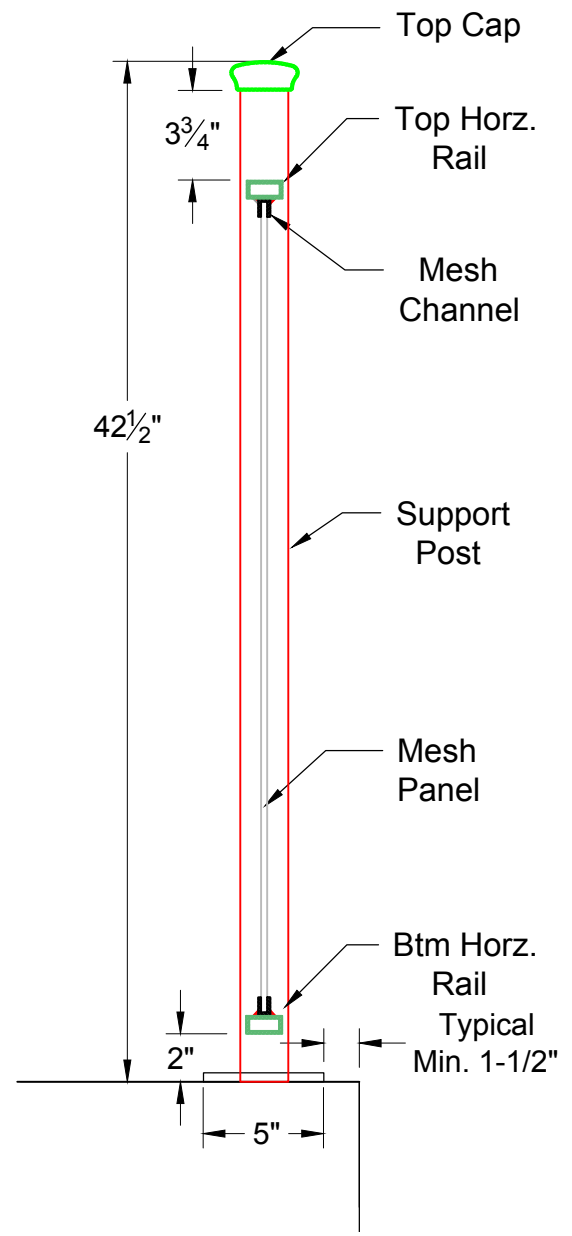
Customer: MULLET'S ALUMINUM	
Date: May. 23, 19	Project Name: RAILINGS
Drawn By: Nick, L.	Drawing Description: MRS - 200 Typ. Core Mount
Scale: AS NOTED	Page: (1)

MULLET'S ALUMINUM PRODUCTS INC.
 WELDING FABRICATION DEPT.
 6345 McIntosh Road Office # (941) 371 - 3502
 Sarasota, FL 34238 Fax # (941) 378 - 5676

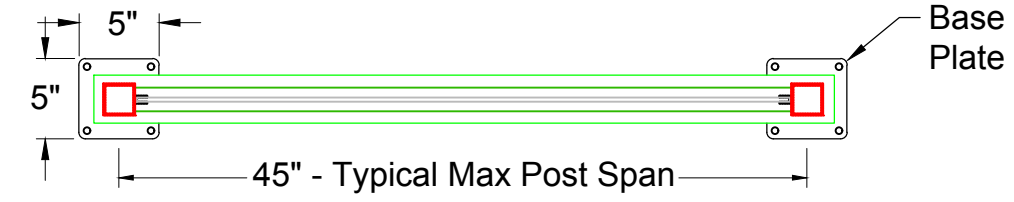
Material List:

2-7/8" x 1-1/4"	6063-T52 # 133	Top Cap (Shown)
3/4" x1-1/2" x1/8"	6063-T52 Rect. Tube	Top Horiz. Rail
2" x 2" x 1/8"	6061-T6 Sq. Tube	Support Posts
3/4" x1-1/2" x1/8"	6063-T52 Rect. Tube	Bottom Rail
3/4"x1/2"x1/8"	6063-T52 Channel	Mesh Channel
1/4" Wire	6063-T52 Crimp Lock	2" SQ. C.L. Mesh Panel
1/4" Wire	6063-T52 Crimp Lock	Various Opening (Option)
5" x 5" x 3/8"	6061-T6 CNC Cut	Base Plate (Option)

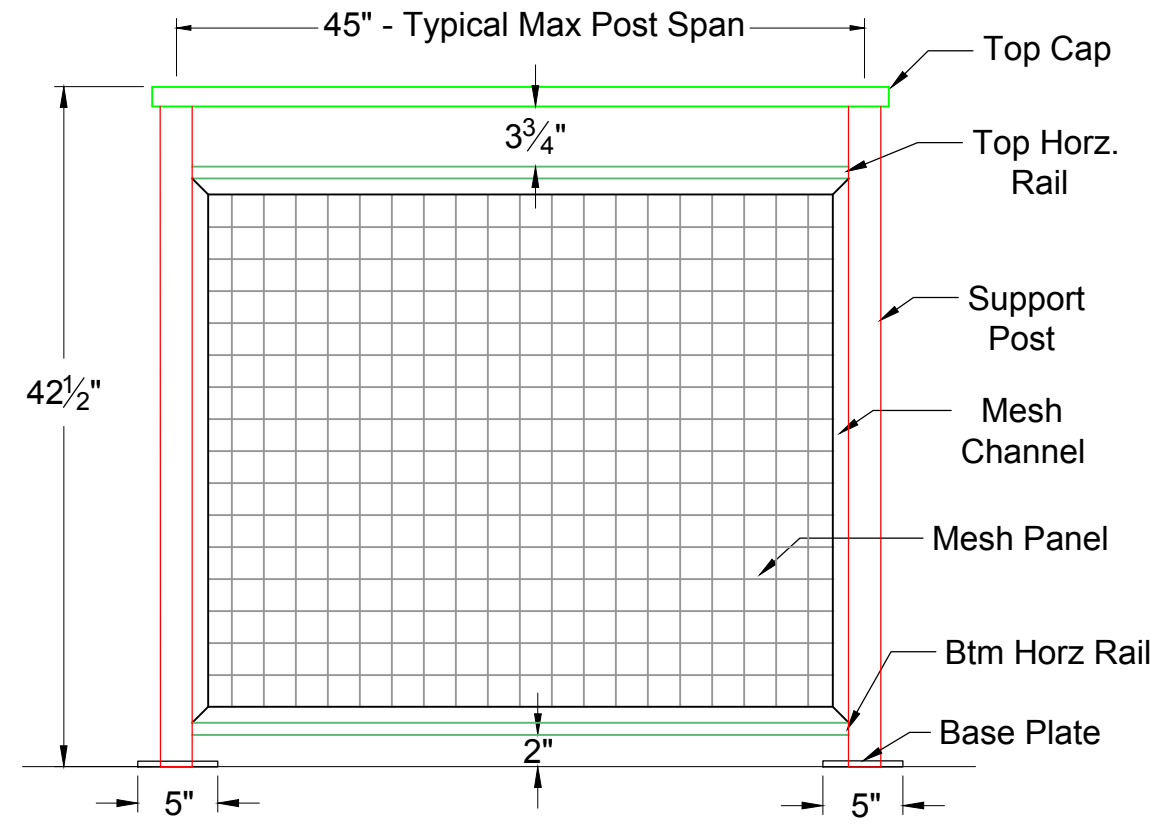
All rights reserved and are the property of Mullet's Aluminum Products, Inc. No part of the materials may be copied, photocopied, reproduced, translated or reduced to any electronic medium or machine-readable form, in whole or in part, without prior written consent of Mullet's Products, Inc. All materials are protected by United States Copyright Law.



ENLARGED SECTION 1 1/2" = 1' - 0"



PLAN VIEW 1" = 1' - 0"

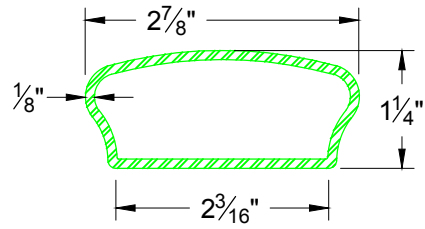


ELEVATION 1" = 1' - 0"

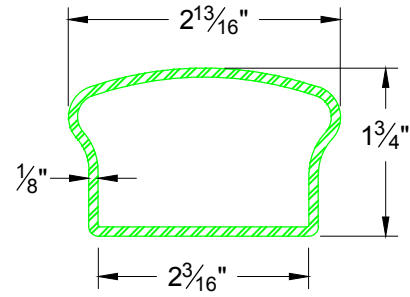
Dimensions and Components may vary based on Site Specific Engineering

Customer: MULLET'S ALUMINUM	
Date: May. 23, 19	Project Name: RAILINGS
Drawn By: Nick, L.	Drawing Description: MRS - 200 Opt. Plate Mount
Scale: AS NOTED	Page: (2)

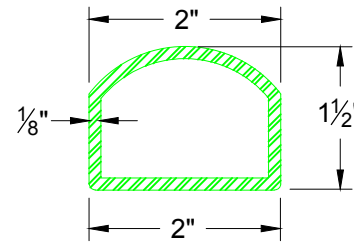
MULLET'S ALUMINUM PRODUCTS INC.
WELDING FABRICATION DEPT.
 6345 McIntosh Road Office # (941) 371 - 3502
 Sarasota, FL 34238 Fax # (941) 378 - 5676



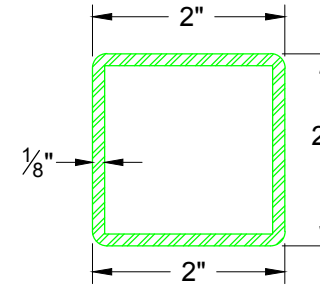
TOP CAP (SHOWN)
133



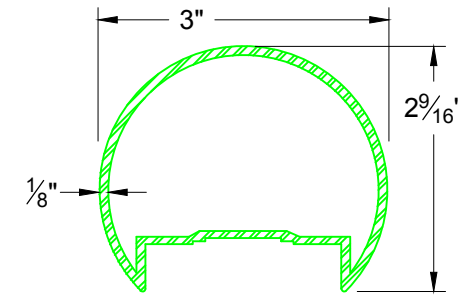
TOP CAP OPTION
137



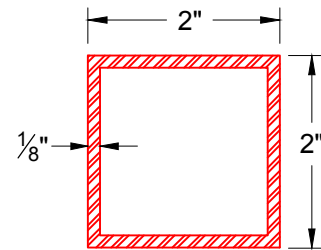
TOP CAP OPTION
MA 14



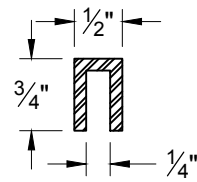
TOP CAP OPTION
SQ 2"



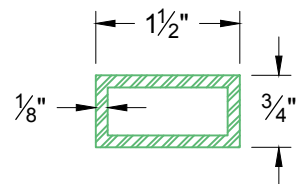
TOP CAP OPTION
#149



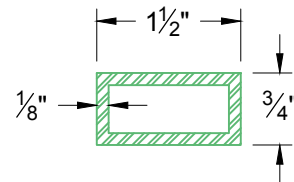
SUPPORT POST



MESH CHANNEL



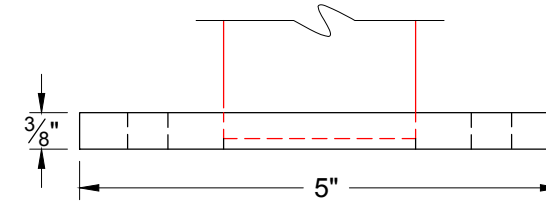
TOP HORIZ. RAIL



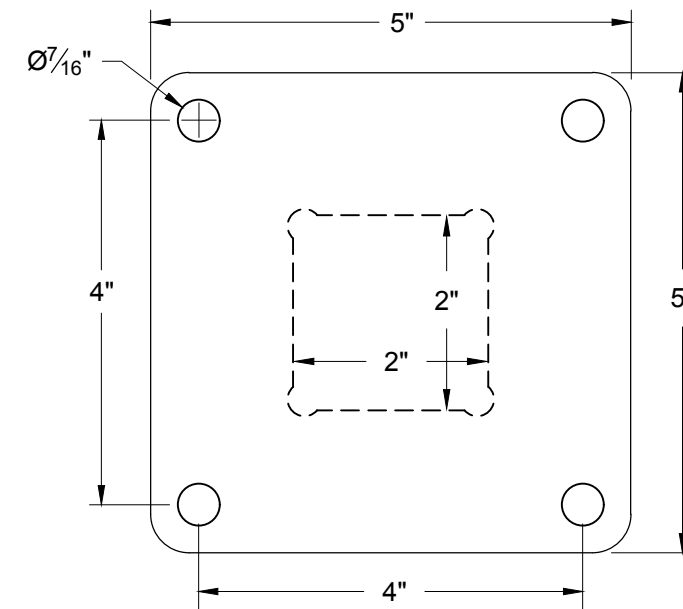
BOTTOM RAIL

Material List:

- | | | |
|--------------------|---------------------|----------------------------|
| 2-7/8" x 1-1/4" | 6063-T52 # 133 | Top Cap (Shown) |
| 3/4" x1-1/2" x1/8" | 6063-T52 Rect. Tube | Top Horiz. Rail |
| 2" x 2" x 1/8" | 6061-T6 Sq. Tube | Support Posts |
| 3/4" x1-1/2" x1/8" | 6063-T52 Rect. Tube | Bottom Rail |
| 3/4"x1/2"x1/8" | 6063-T52 Channel | Mesh Channel |
| 1/4" Wire | 6063-T52 Crimp Lock | 2" SQ. C.L. Mesh Panel |
| 1/4" Wire | 6063-T52 Crimp Lock | Various Opening (Option) |
| 5" x 5" x 3/8" | 6061-T6 CNC Cut | Base Plate (Option) |



BASE PLATE (Elev.)



BASE PLATE (Plan)

(BASE PLATE OPTION SUBJECT TO ENGINEERING)

All rights reserved and are the property of Mullet's Aluminum Products, Inc. No part of the materials may be copied, photocopied, reproduced, translated or reduced to any electronic medium or machine-readable form, in whole or in part, without prior written consent of Mullet's Products, Inc. All materials are protected by United States Copyright Law.

Customer: **MULLET'S ALUMINUM**
Date: May. 23, 19

Project Name: **RAILINGS**
Drawn By: Nick, L.

Drawing Description: **MRS - 200 Component List**
Scale: 6" = 1'-0"
Page: (3)



WELDING FABRICATION DEPT.
6345 McIntosh Road Office # (941) 371 - 3502
Sarasota, FL 34238 Fax # (941) 378 - 5676

Dimensions and Components may vary based on Site Specific Engineering