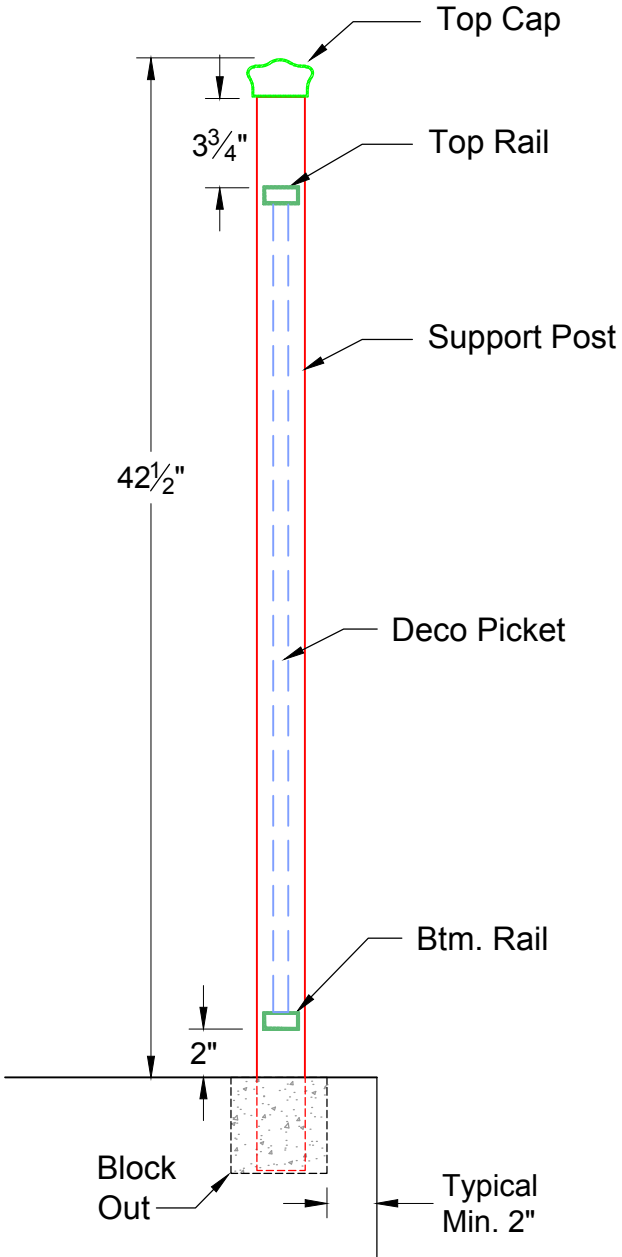
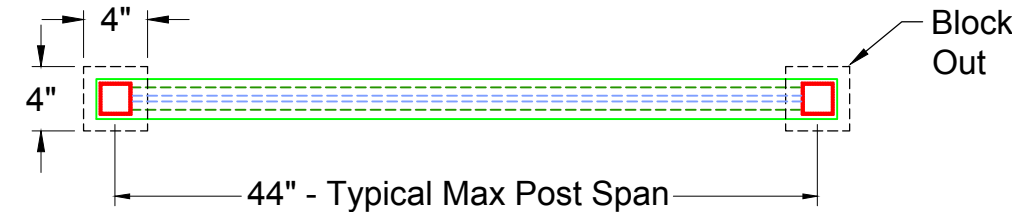


Material List:

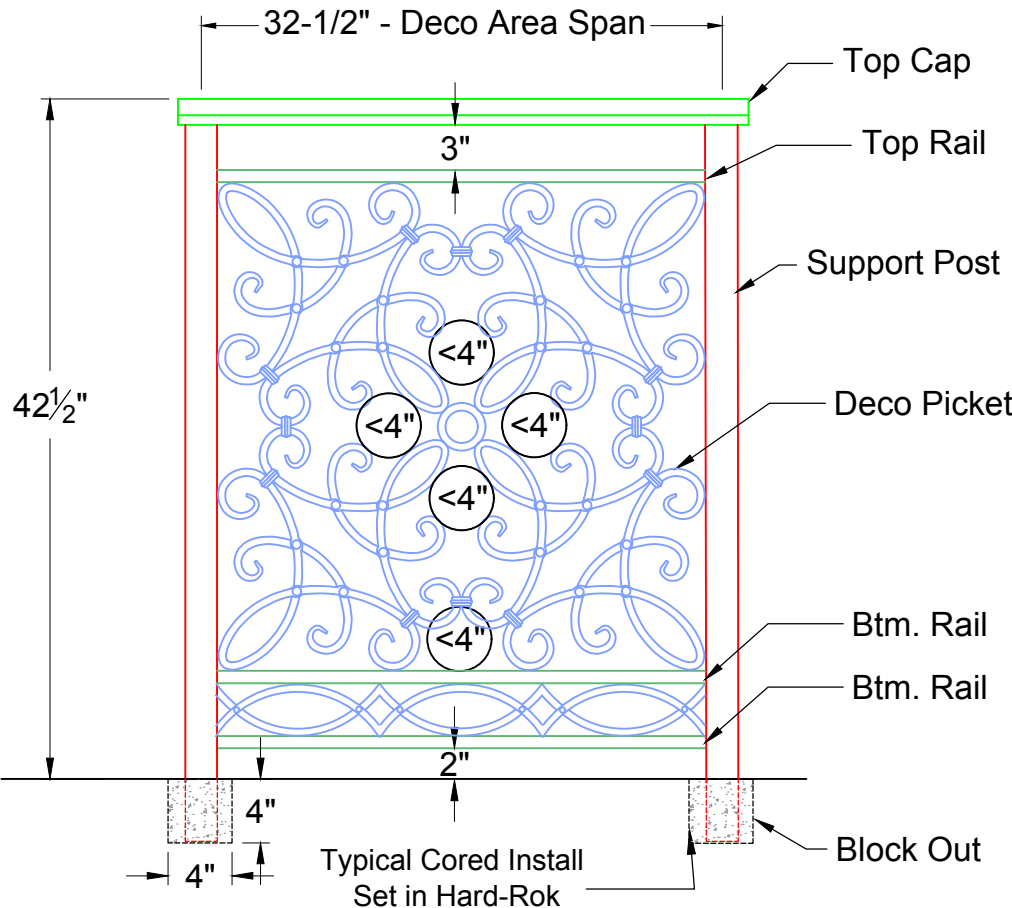
2-3/4"x1-9/16"x1/8"	6063-T52 #296	Top Cap (Shown)
1-1/2" x3/4"x1/8"	6063-T52 Rect. Tube	Top Rail
2" x 2" x 1/8"	6061-T6 Sq. Tube	Support Posts
3/8" Solid	6061-T6 CNC Cut	Deco Picket
1-1/2" x3/4"x1/8"	6063-T52 Rect. Tube	Bottom Rail
5" x 5" x 3/8"	6061-T6 CNC Cut	Base Plate (Option)



ENLARGED SECTION 1/2" = 1' - 0"



PLAN VIEW 1" = 1' - 0"



ELEVATION 1" = 1' - 0"

Dimensions and Components may vary based on Site Specific Engineering

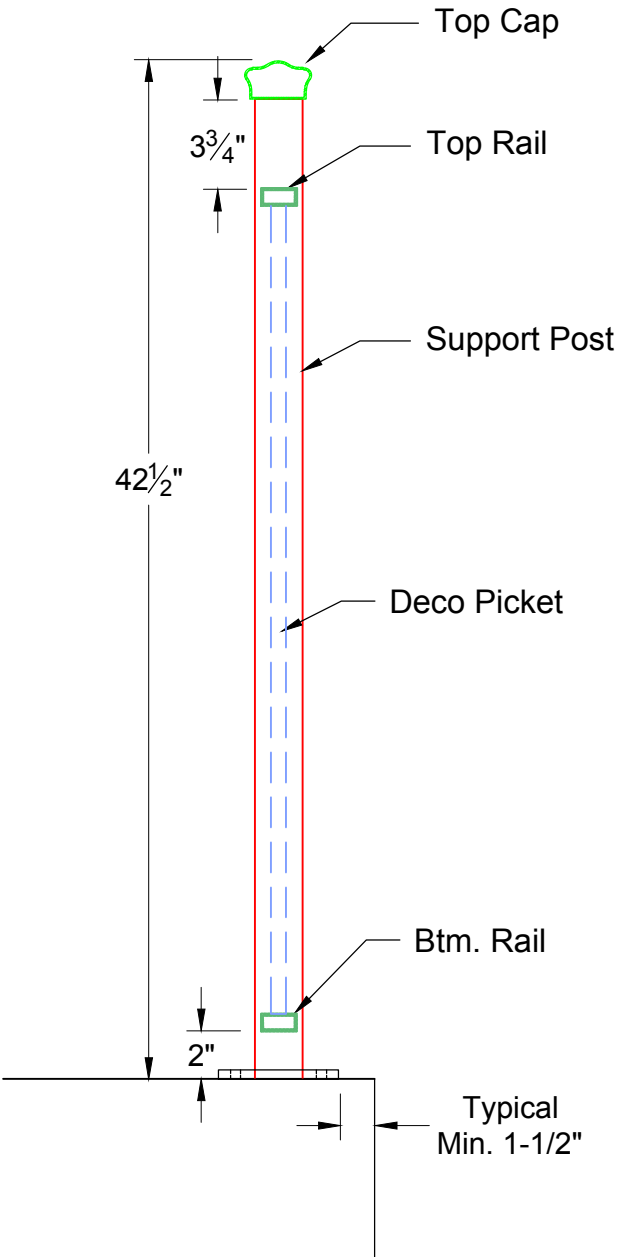
All rights reserved and are the property of Mullet's Aluminum Products, Inc. No part of the materials may be copied, photocopied, reproduced, translated or reduced to any electronic medium or machine-readable form, in whole or in part, without prior written consent of Mullet's Products, Inc. All materials are protected by United States Copyright Law.

Date:	Customer:
May. 23, 19	MULLET'S ALUMINUM
Drawn By:	Project Name:
Nick, L.	DECO RAIL
Scale:	Drawing Description:
AS NOTED	DRS - 200 Typ. Core Mount
	Page: (1)

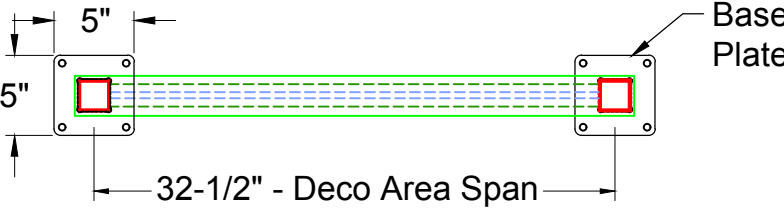
MULLET'S ALUMINUM PRODUCTS INC.
 WELDING FABRICATION DEPT.
 6345 McIntosh Road Office # (941) 371 - 3502
 Sarasota, FL 34238 Fax # (941) 378 - 5676

Material List:

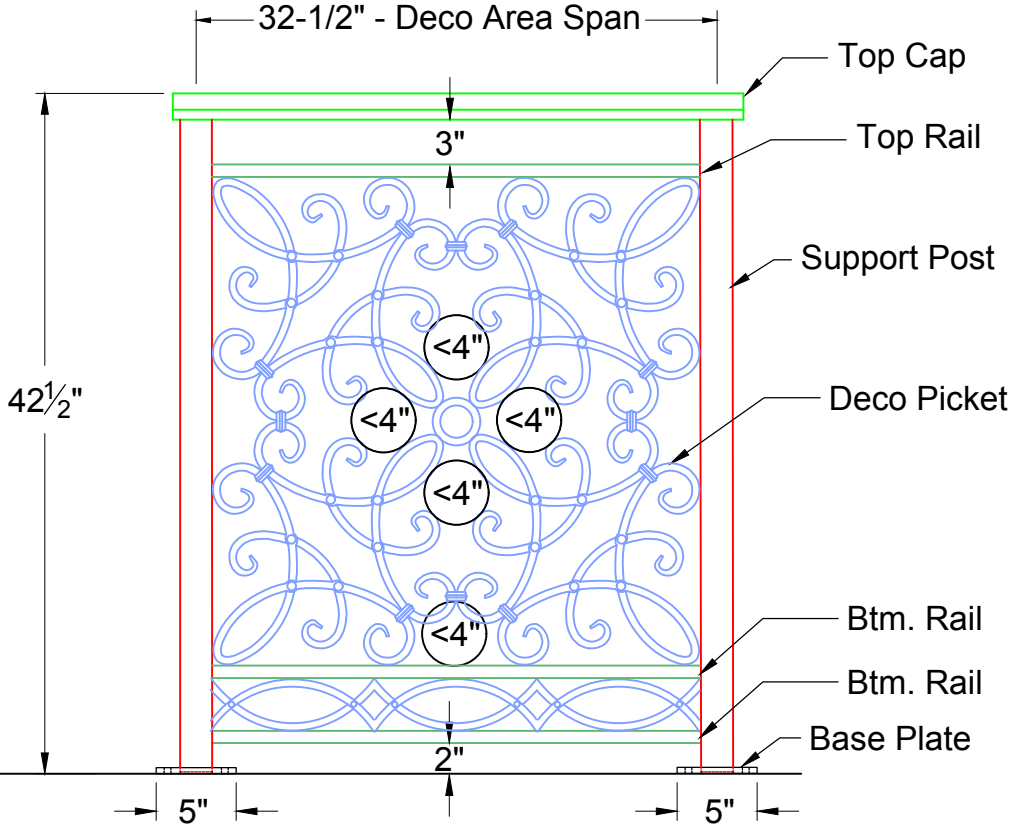
2-3/4"x1-9/16"x1/8"	6063-T52 #296	Top Cap (Shown)
1-1/2" x3/4"x1/8"	6063-T52 Rect. Tube	Top Rail
2" x 2" x 1/8"	6061-T6 Sq. Tube	Support Posts
3/8" Solid	6061-T6 CNC Cut	Deco Picket
1-1/2" x3/4"x1/8"	6063-T52 Rect. Tube	Bottom Rail
5" x 5" x 3/8"	6061-T6 CNC Cut	Base Plate (Option)



ENLARGED SECTION 1 1/2" = 1' - 0"



PLAN VIEW 1" = 1' - 0"



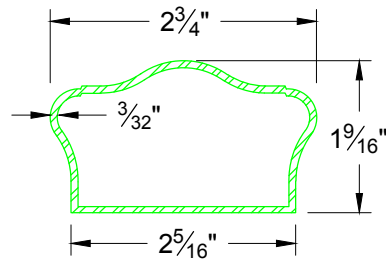
ELEVATION 1" = 1' - 0"

Dimensions and Components may vary based on Site Specific Engineering

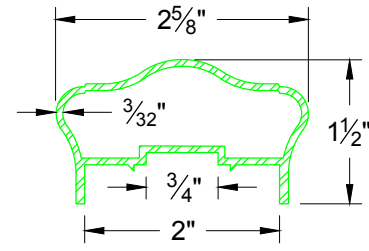
All rights reserved and are the property of Mullet's Aluminum Products, Inc. No part of the materials may be copied, photocopied, reproduced, translated or reduced to any electronic medium or machine-readable form, in whole or in part, without prior written consent of Mullet's Products, Inc. All materials are protected by United States Copyright Law.

Date:	May. 23, 19	Customer:	MULLET'S ALUMINUM
Drawn By:	Nick, L.	Project Name:	DECO RAIL
Scale:	AS NOTED	Drawing Description:	DRS - 200 Opt. Plate Mount
			Page: (2)

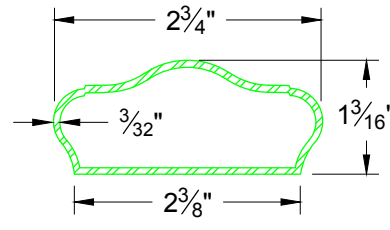
MULLET'S ALUMINUM PRODUCTS INC.
 WELDING FABRICATION DEPT.
 6345 McIntosh Road Office # (941) 371-3502
 Sarasota, FL 34238 Fax # (941) 378-5676



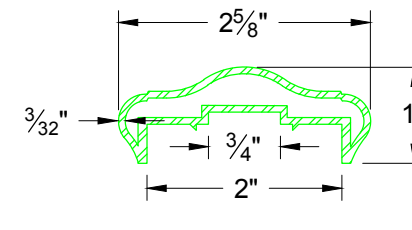
TOP CAP (SHOWN)
296



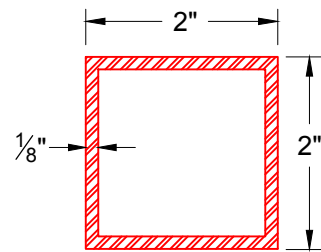
TOP CAP OPTION
295



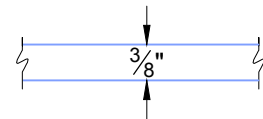
TOP CAP OPTION
291



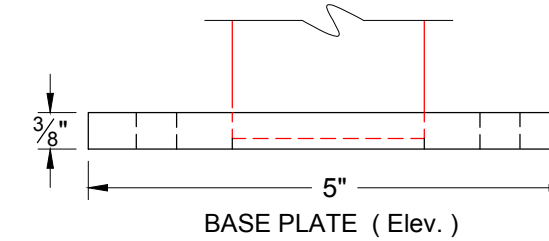
TOP CAP OPTION
290



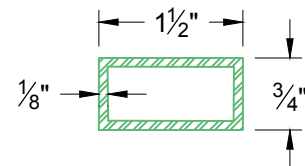
SUPPORT POST



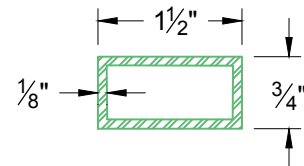
DECO PICKET



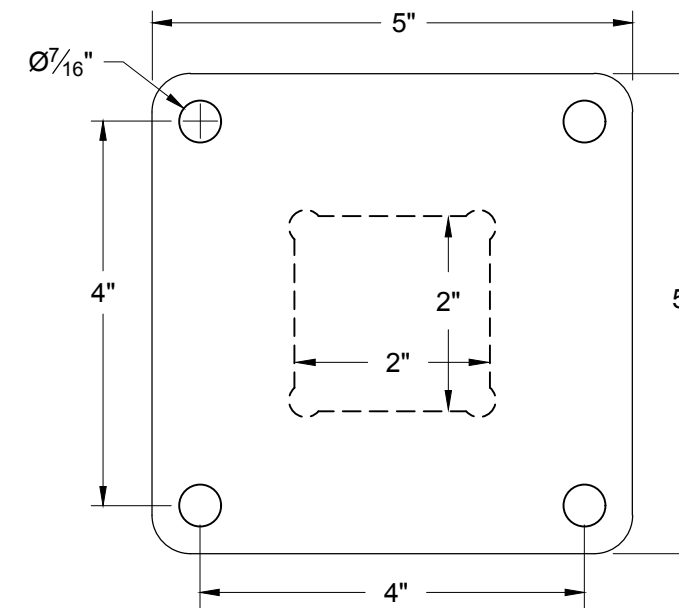
BASE PLATE (Elev.)



TOP RAIL



BOTTOM RAIL



BASE PLATE (Plan)

(BASE PLATE OPTION SUBJECT TO ENGINEERING)

Material List:

2-3/4"x1-9/16"x1/8"	6063-T52	#296	Top Cap (Shown)
1-1/2" x3/4"x1/8"	6063-T52	Rect. Tube	Top Rail
2" x 2" x 1/8"	6061-T6	Sq. Tube	Support Posts
3/8" Solid	6061-T6	CNC Cut	Deco Picket
1-1/2" x3/4"x1/8"	6063-T52	Rect. Tube	Bottom Rail
5" x 5" x 3/8"	6061-T6	CNC Cut	Base Plate (Option)

All rights reserved and are the property of Mullet's Aluminum Products, Inc. No part of the materials may be copied, photocopied, reproduced, translated or reduced to any electronic medium or machine-readable form, in whole or in part, without prior written consent of Mullet's Products, Inc. All materials are protected by United States Copyright Law.

Customer: **MULLET'S ALUMINUM**
Date: May. 23, 19

Project Name: **DECO RAIL**
Drawn By: Nick, L.

Drawing Description: **DRS - 200 Component List**
Scale: N.T.S.
Page: **(3)**



WELDING FABRICATION DEPT.
6345 McIntosh Road Office # (941) 371 - 3502
Sarasota, FL 34238 Fax # (941) 378 - 5676