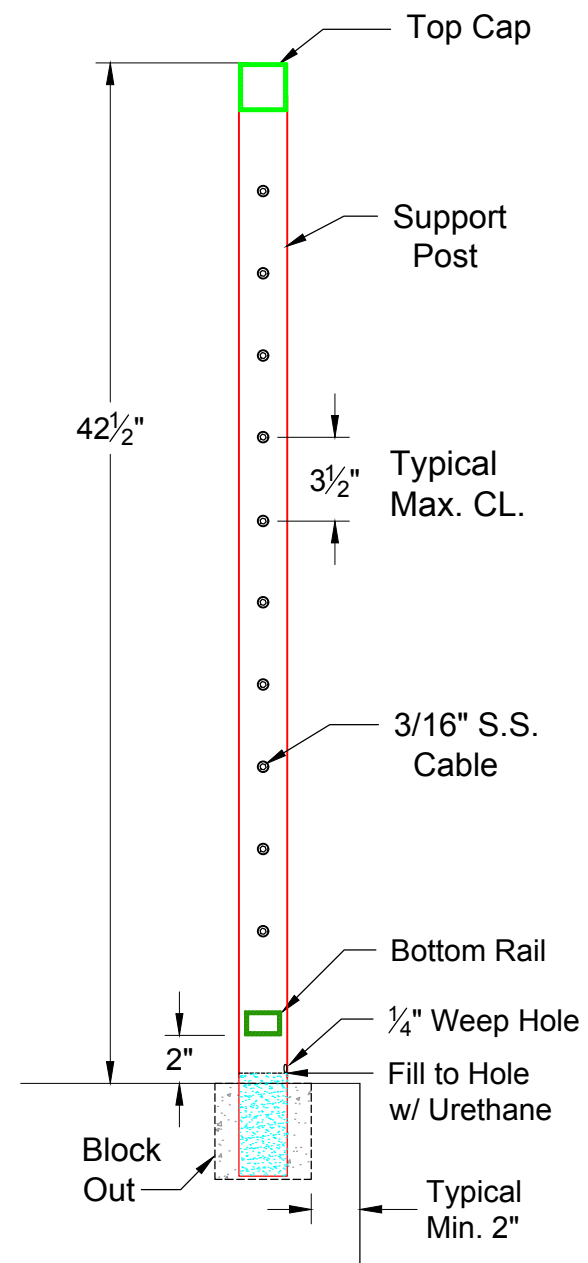


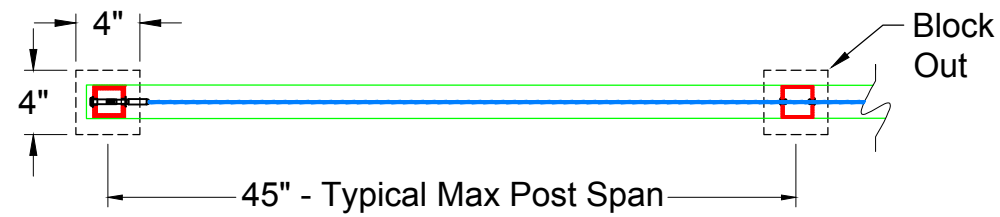
Material List:

2" x 2" x 1/8"	6063-T52 Sq. Tube	Top Cap (Shown)
2" x 2" x 1/4"	6061-T6 Sq. Tube	Support Post (End)
2" x 2" x 1/8"	6061-T6 Sq. Tube	Support Post (Mid)
3/16" Dia.	316 S.S. 1 x 19	Cable (Recommended)
3/16" Dia.	316 S.S. 7 x 7	Cable (Option)
1-1/2"x1"x1/8"	6063-T52 Rect. Tube	Bottom Rail
5" x 5" x 3/8"	6061-T6 CNC Cut	Base Plate (Option)

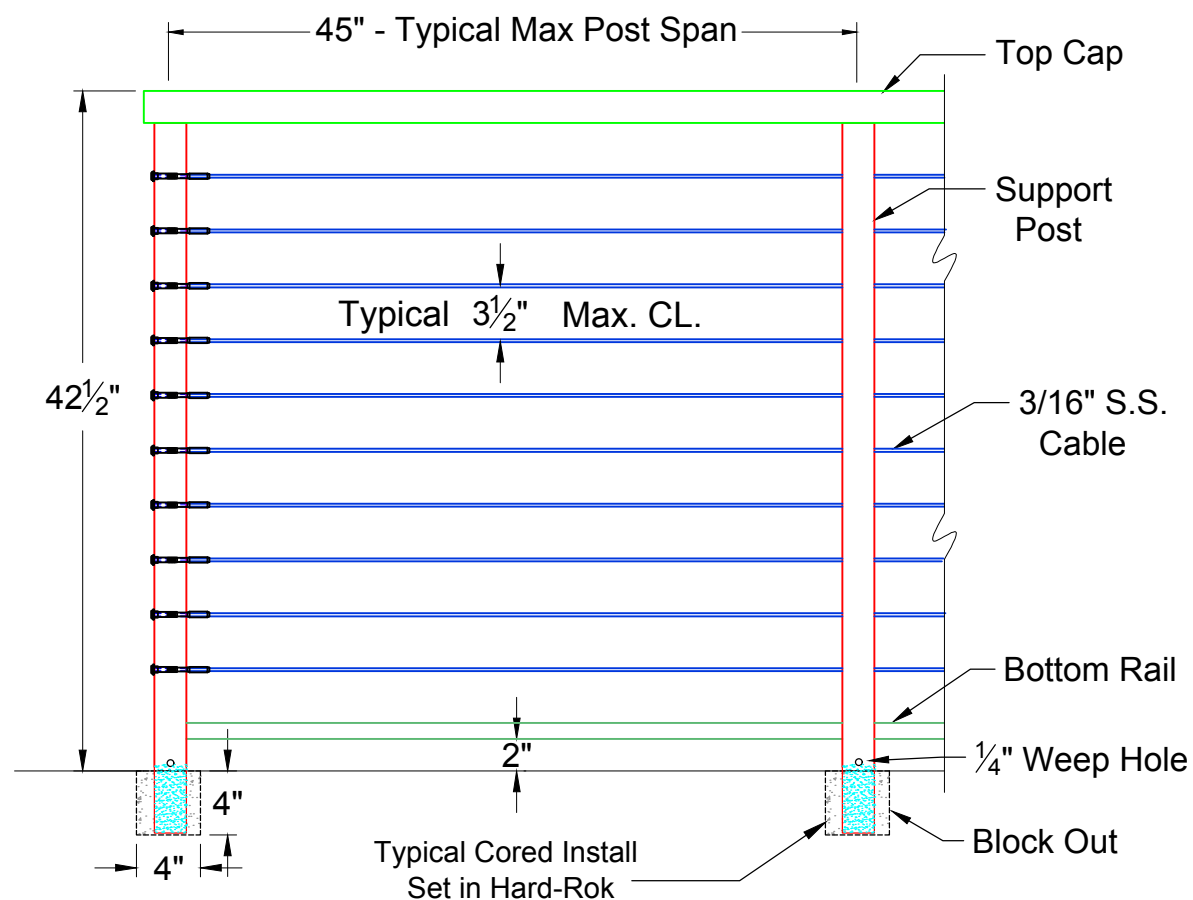
All rights reserved and are the property of Mullet's Aluminum Products, Inc. No part of the materials may be copied, photocopied, reproduced, translated or reduced to any electronic medium or machine-readable form, in whole or in part, without prior written consent of Mullet's Products, Inc. All materials are protected by United States Copyright Law.



ENLARGED SECTION 1 1/2" = 1' - 0"



PLAN VIEW 1" = 1' - 0"



ELEVATION 1" = 1' - 0"

Dimensions and Components may vary based on Site Specific Engineering

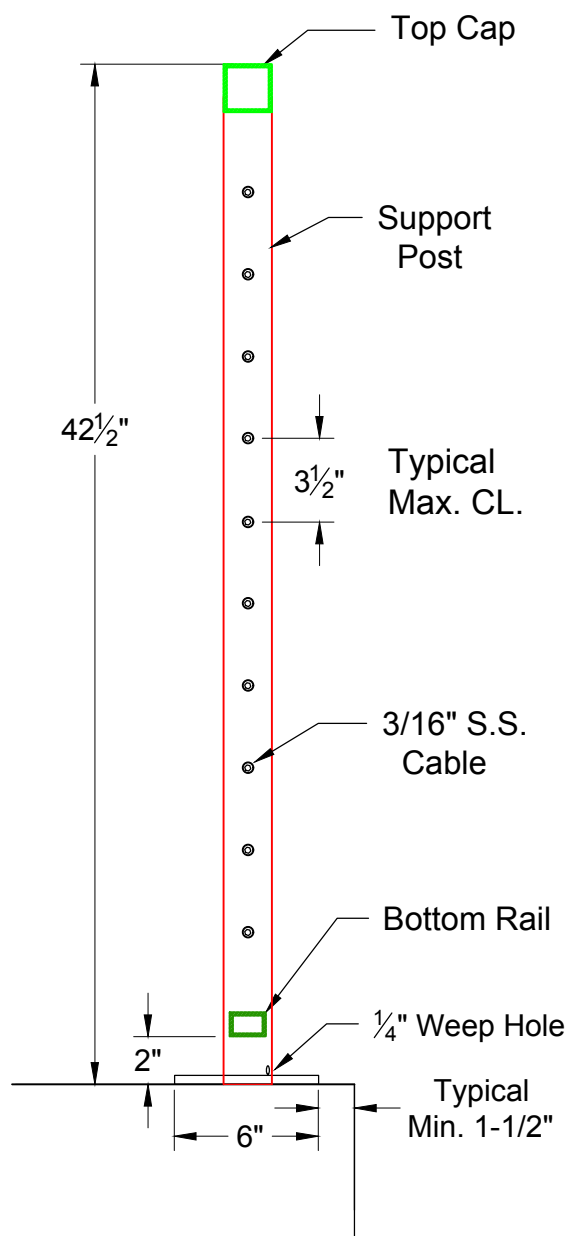
Date:	Customer:
May. 23, 19	MULLET'S ALUMINUM
Drawn By:	Project Name:
Nick, L.	RAILINGS
Scale:	Drawing Description:
AS NOTED	CBRS - 100 Typ. Core Mount
	Page: (1)

MULLET'S ALUMINUM PRODUCTS INC.
WELDING FABRICATION DEPT.
6345 McIntosh Road Office # (941) 371 - 3502
Sarasota, FL 34238 Fax # (941) 378 - 5676

Material List:

2" x 2" x 1/8"	6063-T52 Sq. Tube	Top Cap (Shown)
2" x 2" x 1/4"	6061-T6 Sq. Tube	Support Post (End)
2" x 2" x 1/8"	6061-T6 Sq. Tube	Support Post (Mid)
3/16" Dia.	316 S.S. 1 x 19	Cable (Recommended)
3/16" Dia.	316 S.S. 7 x 7	Cable (Option)
1-1/2"x1"x1/8"	6063-T52 Rect. Tube	Bottom Rail
5" x 5" x 3/8"	6061-T6 CNC Cut	Base Plate (Option)

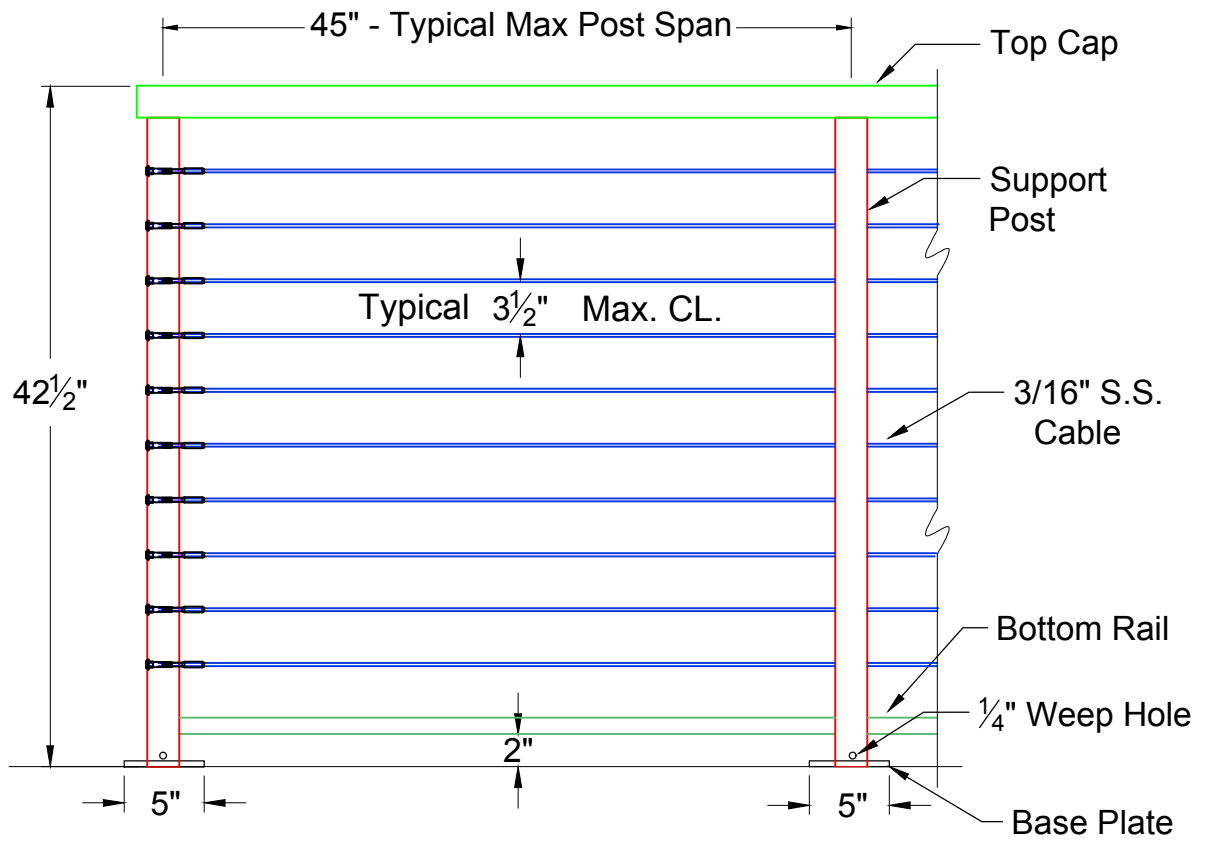
All rights reserved and are the property of Mullet's Aluminum Products, Inc. No part of the materials may be copied, photocopied, reproduced, translated or reduced to any electronic medium or machine-readable form, in whole or in part, without prior written consent of Mullet's Products, Inc. All materials are protected by United States Copyright Law.



ENLARGED SECTION 1/2" = 1' - 0"



PLAN VIEW 1" = 1' - 0"

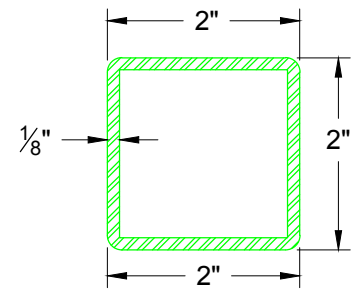


ELEVATION 1" = 1' - 0"

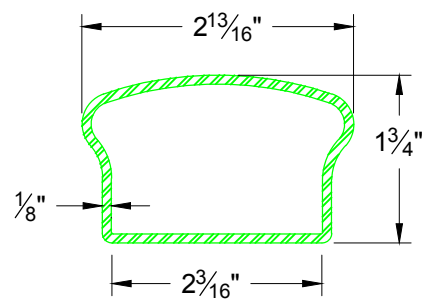
Dimensions and Components may vary based on Site Specific Engineering

Customer: MULLET'S ALUMINUM	
Date: May. 23, 19	Project Name: RAILINGS
Drawn By: Nick, L.	Drawing Description: CBRS - 100 Opt. Plate Mount
Scale: AS NOTED	Page: (2)

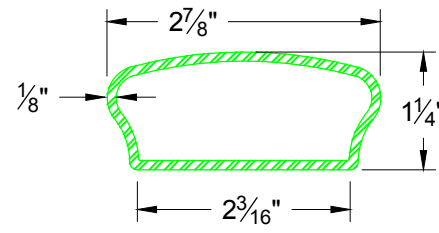
MULLET'S ALUMINUM PRODUCTS INC.
 WELDING FABRICATION DEPT.
 6345 McIntosh Road Office # (941) 371 - 3502
 Sarasota, FL 34238 Fax # (941) 378 - 5676



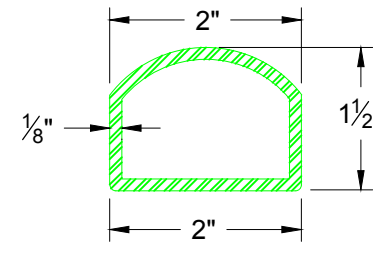
TOP CAP (SHOWN)
SQ 2" Rad. Edge



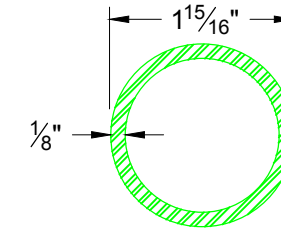
TOP CAP OPTION
137



TOP CAP OPTION
133

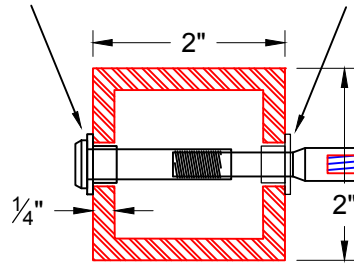


TOP CAP OPTION
MA 14



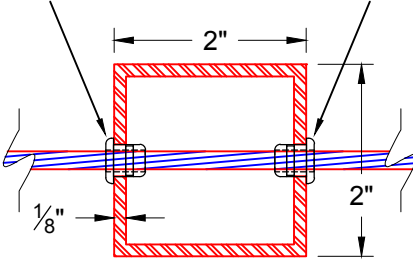
TOP CAP OPTION
1 1/2 " SCH 40 -P

NYLON HAT WASHER (each end)

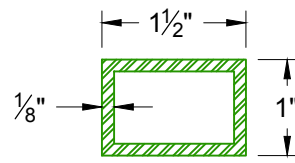


SUPPORT POST (End)

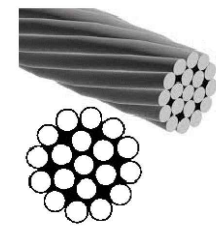
NYLON GROMMET (each end)



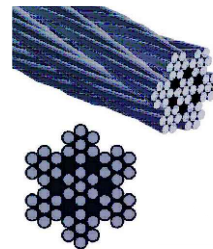
SUPPORT POST (Mid)



BOTTOM RAIL



1 x 19



7 x 7



316 S.S. 1 x 19 CABLE (Recommended)

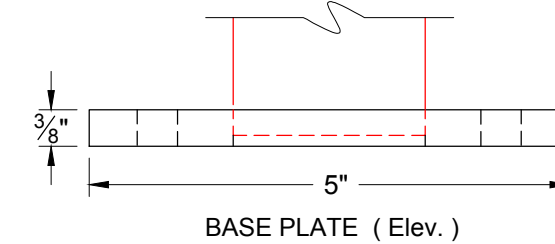


316 S.S. 7 x 7 CABLE

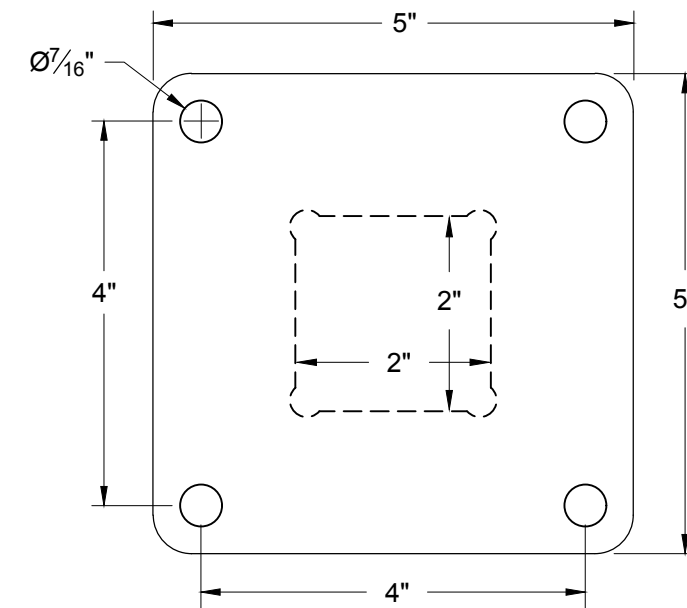
Material List:

- | | | |
|----------------|---------------------|-----------------------|
| 2" x 2" x 1/8" | 6063-T52 Sq. Tube | Top Cap (Shown) |
| 2" x 2" x 1/4" | 6061-T6 Sq. Tube | Support Post (End) |
| 2" x 2" x 1/8" | 6061-T6 Sq. Tube | Support Post (Mid) |
| 3/16" Dia. | 316 S.S. 1 x 19 | Cable (Recommended) |
| 3/16" Dia. | 316 S.S. 7 x 7 | Cable (Option) |
| 1-1/2"x1"x1/8" | 6063-T52 Rect. Tube | Bottom Rail |
| 5" x 5" x 3/8" | 6061-T6 CNC Cut | Base Plate (Option) |

- Top Cap (Shown)
Support Post (End)
Support Post (Mid)
Cable (Recommended)
Cable (Option)
Bottom Rail
Base Plate (Option)



BASE PLATE (Elev.)



BASE PLATE (Plan)

(BASE PLATE OPTION SUBJECT TO ENGINEERING)

All rights reserved and are the property of Mullet's Aluminum Products, Inc. No part of the materials may be copied, photocopied, reproduced, translated or reduced to any electronic medium or machine-readable form, in whole or in part, without prior written consent of Mullet's Aluminum Products, Inc. All materials are protected by United States Copyright Law.

Customer: **MULLET'S ALUMINUM**

Project Name: **RAILINGS**

Project Description: **CBRS - 100 Component List**

Date: May. 23, 19

Drawn By: Nick, L.

Scale: N.T.S.

Page: (3)



WELDING FABRICATION DEPT.
Office # (941) 371 - 3502
6345 McIntosh Road Sarasota, FL 34238 Fax # (941) 378 - 5676

Dimensions and Components may vary based on Site Specific Engineering