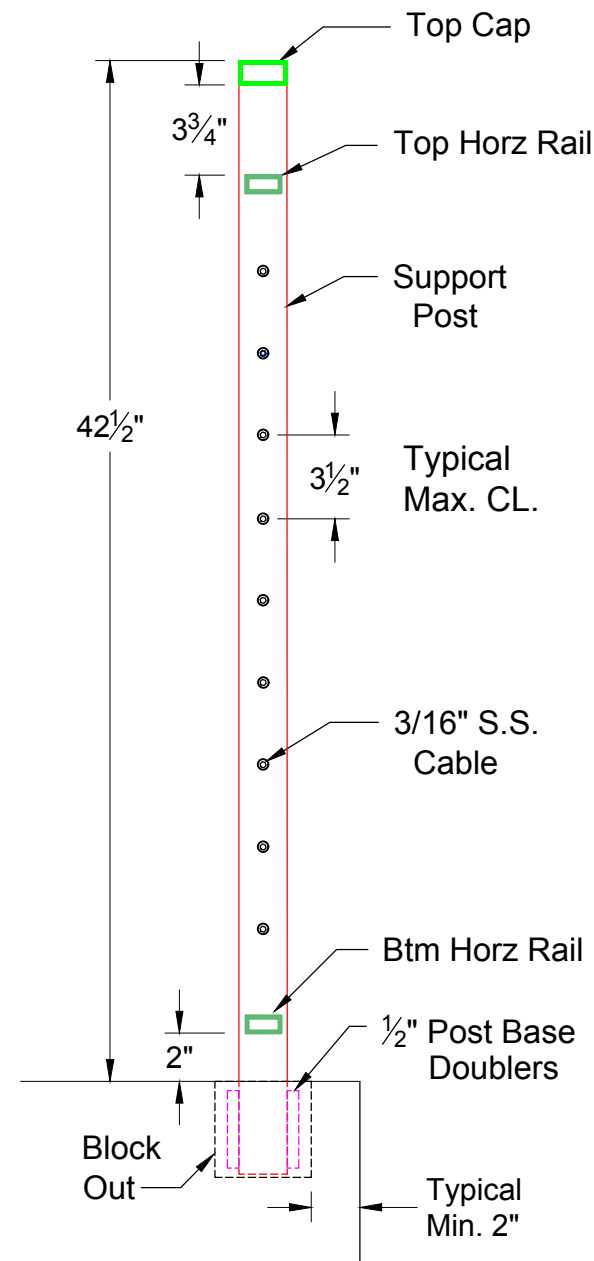


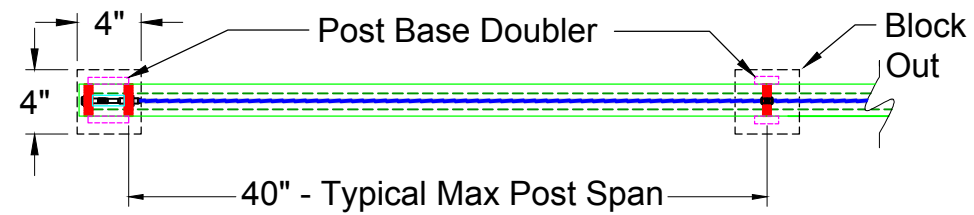
### Material List:

|                   |                       |                          |
|-------------------|-----------------------|--------------------------|
| 2" x 1" x 1/8"    | 6061-T6 Rect. Tube    | Top Cap                  |
| 1-1/2"x 3/4"x1/8" | 6063-T52 Rect. Tube   | Horizontal Rail ( Top )  |
| 2" x 1/2"         | 6061-T6 Flat Bar      | Support Post             |
| 5/8" x 3/32"      | 6063-T52 3/8 sch.40-P | Cable Sleeve Tube        |
| 3/16" Dia.        | 316 S.S. 1 x 19       | Cable (Recommended)      |
| 3/16" Dia.        | 316 S.S. 7 x 7        | Cable ( Option )         |
| 1-1/2"x 3/4"x1/8" | 6063-T52 Rect. Tube   | Horizontal Rail ( Btm. ) |
| 1/2" Thick        | 6061-T6 CNC Cut       | Post Base Doubler        |
| 1/2" Thick        | 6061-T6 CNC Cut       | Base Plates ( Option )   |

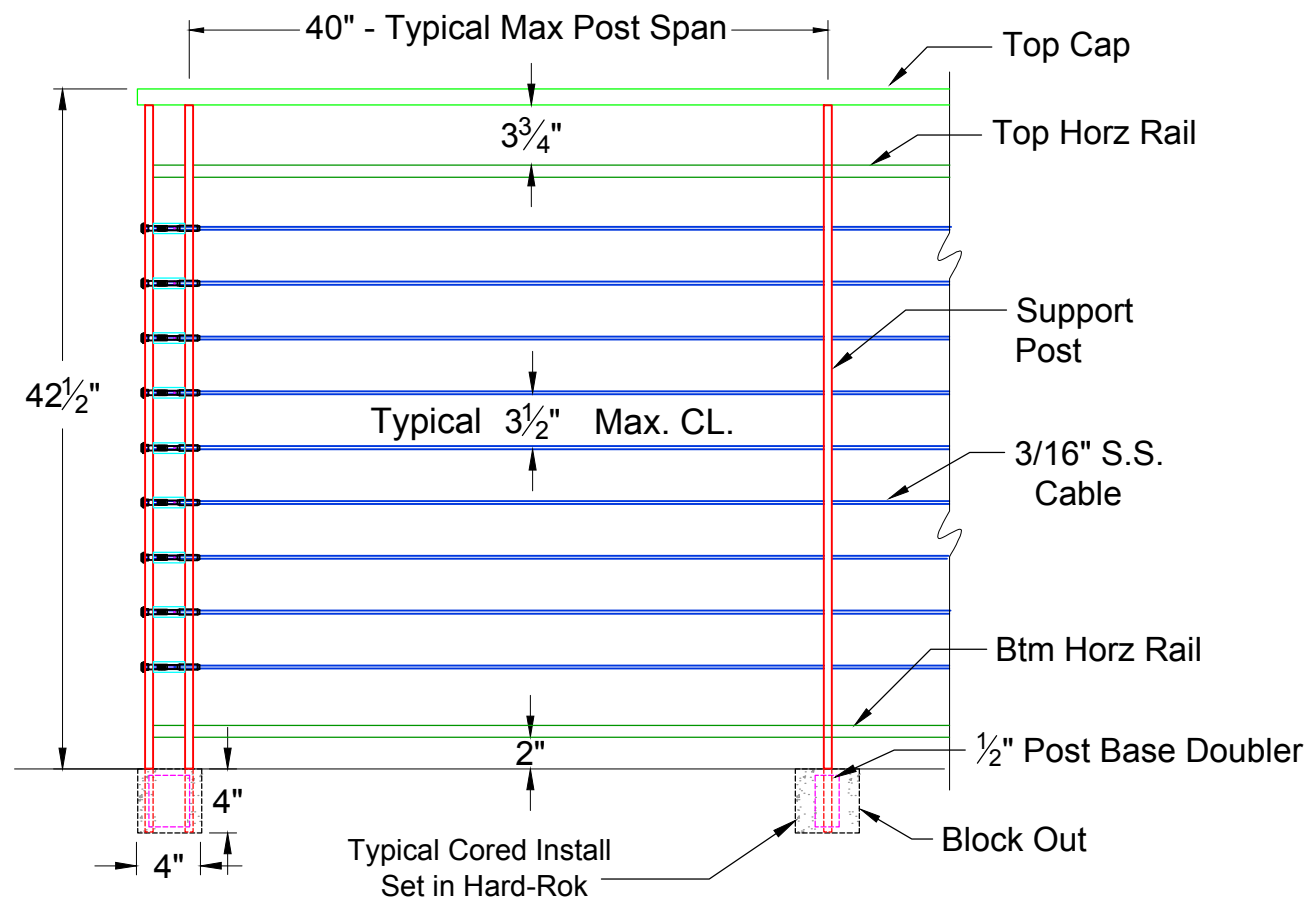
All rights reserved and are the property of Mullet's Aluminum Products, Inc. No part of the materials may be copied, photocopied, reproduced, translated or reduced to any electronic medium or machine-readable form, in whole or in part, without prior written consent of Mullet's Products, Inc. All materials are protected by United States Copyright Law.



**ENLARGED SECTION** 1 1/2" = 1' - 0"



**PLAN VIEW** 1" = 1' - 0"



**ELEVATION** 1" = 1' - 0"

Dimensions and Components may vary based on Site Specific Engineering

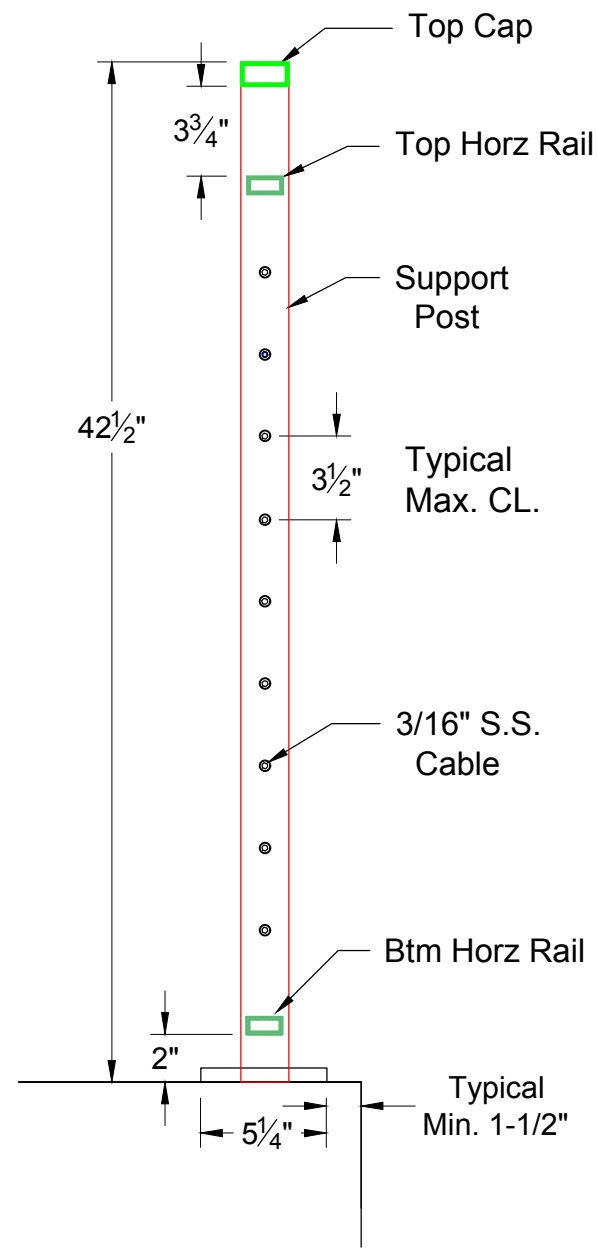
|           |             |                      |                            |
|-----------|-------------|----------------------|----------------------------|
| Date:     | May. 23, 19 | Customer:            | MULLET'S ALUMINUM          |
| Drawn By: | Nick, L.    | Project Name:        | RAILINGS                   |
| Scale:    | AS NOTED    | Drawing Description: | CBRS - 300 Typ. Core Mount |
|           |             |                      | Page: ( 1 )                |

**MULLET'S ALUMINUM PRODUCTS INC.**  
**WELDING FABRICATION DEPT.**  
 6345 McIntosh Road Office # ( 941 ) 371 - 3502  
 Sarasota, FL 34238 Fax # ( 941 ) 378 - 5676

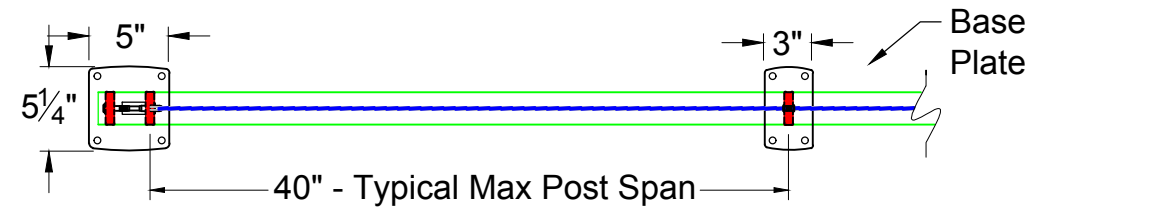
**Material List:**

|                   |                       |                          |
|-------------------|-----------------------|--------------------------|
| 2" x 1" x 1/8"    | 6061-T6 Rect. Tube    | Top Cap                  |
| 1-1/2"x 3/4"x1/8" | 6063-T52 Rect. Tube   | Horizontal Rail ( Top )  |
| 2" x 1/2"         | 6061-T6 Flat Bar      | Support Post             |
| 5/8" x 3/32"      | 6063-T52 3/8 sch.40-P | Cable Sleeve Tube        |
| 3/16" Dia.        | 316 S.S. 1 x 19       | Cable (Recommended)      |
| 3/16" Dia.        | 316 S.S. 7 x 7        | Cable ( Option )         |
| 1-1/2"x 3/4"x1/8" | 6063-T52 Rect. Tube   | Horizontal Rail ( Btm. ) |
| 1/2" Thick        | 6061-T6 CNC Cut       | Post Base Doubler        |
| 1/2" Thick        | 6061-T6 CNC Cut       | Base Plates ( Option )   |

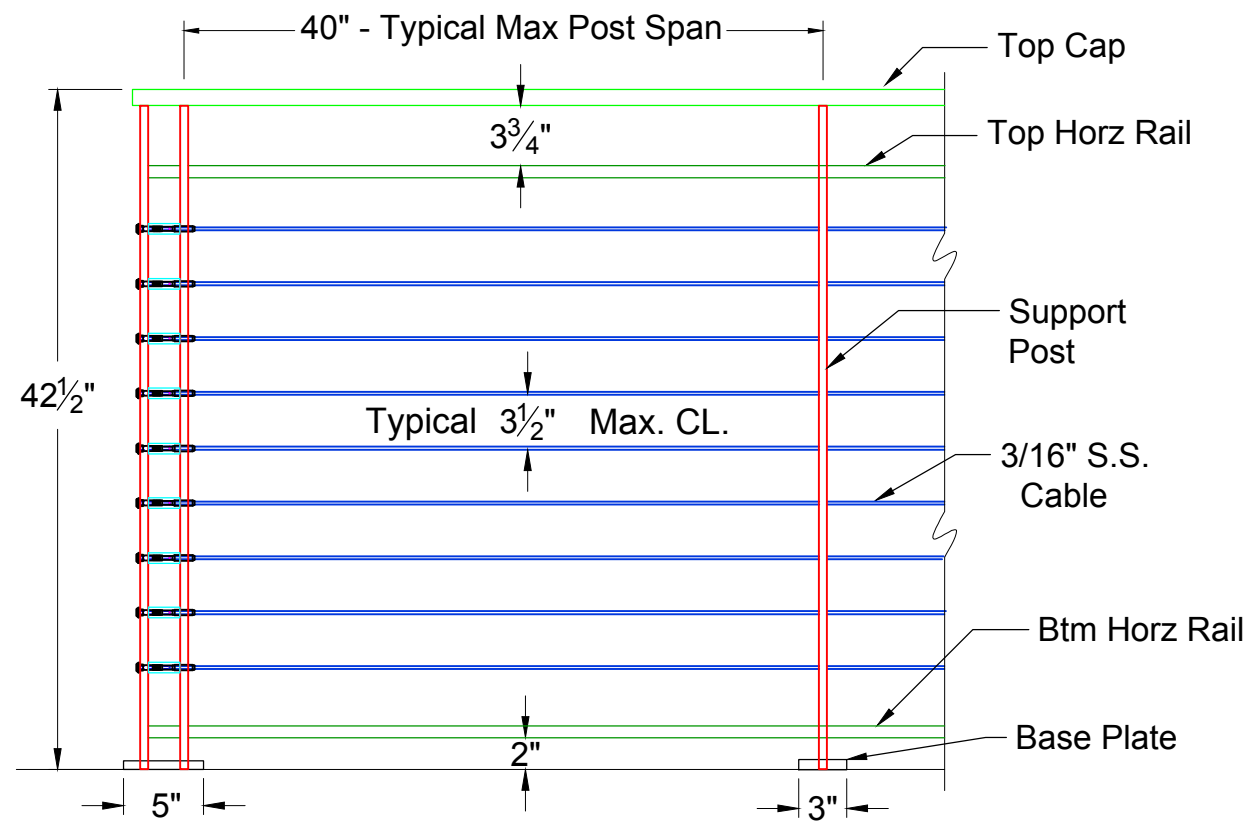
All rights reserved and are the property of Mullet's Aluminum Products, Inc. No part of the materials may be copied, photocopied, reproduced, translated or reduced to any electronic medium or machine-readable form, in whole or in part, without prior written consent of Mullet's Products, Inc. All materials are protected by United States Copyright Law.



**ENLARGED SECTION** 1/2" = 1' - 0"



**PLAN VIEW** 1" = 1' - 0"

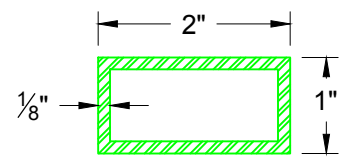


**ELEVATION** 1" = 1' - 0"

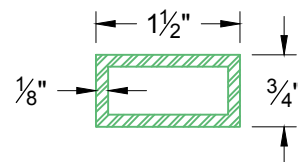
Dimensions and Components may vary based on Site Specific Engineering

|             |                             |
|-------------|-----------------------------|
| Date:       | Customer:                   |
| May. 23, 19 | MULLET'S ALUMINUM           |
| Drawn By:   | Project Name:               |
| Nick, L.    | RAILINGS                    |
| Scale:      | Drawing Description:        |
| AS NOTED    | CBRS - 300 Opt. Plate Mount |
|             | Page: (2)                   |

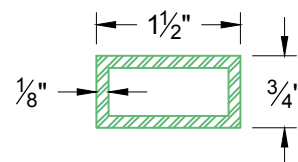
**MULLET'S ALUMINUM PRODUCTS INC.**  
**WELDING FABRICATION DEPT.**  
 6345 McIntosh Road Office # (941) 371-3502  
 Sarasota, FL 34238 Fax # (941) 378-5676



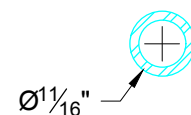
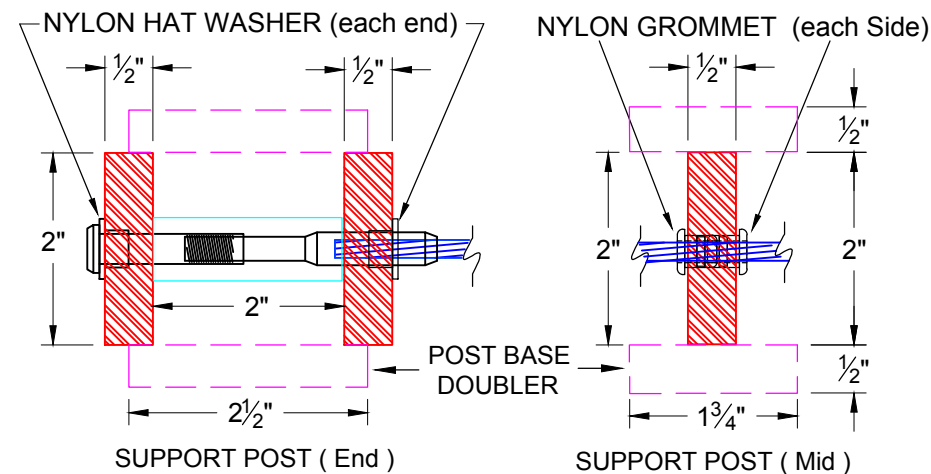
TOP CAP



HORZ RAIL ( Top )



HORZ RAIL ( Bot. )



CABLE SLEEVE TUBE  
3/8- Sch 40 Pipe



316 S.S. 1 x 19 CABLE ( Recommended )



1 x 19



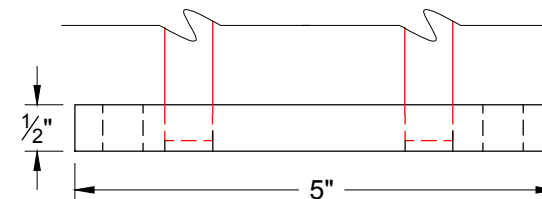
316 S.S. 7 x 7 CABLE



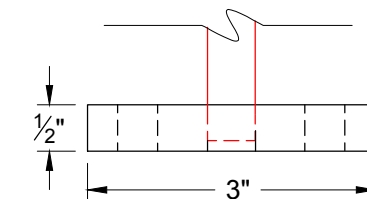
7 x 7

### Material List:

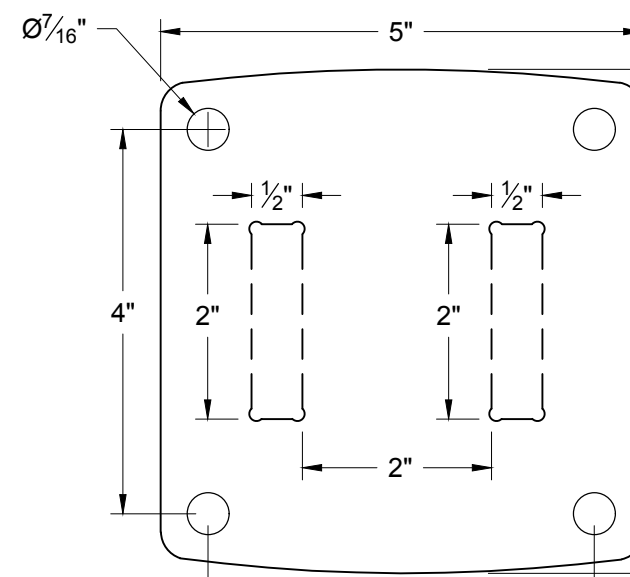
|                   |                       |                          |
|-------------------|-----------------------|--------------------------|
| 2" x 1" x 1/8"    | 6061-T6 Rect. Tube    | Top Cap                  |
| 1-1/2"x 3/4"x1/8" | 6063-T52 Rect. Tube   | Horizontal Rail ( Top )  |
| 2" x 1/2"         | 6061-T6 Flat Bar      | Support Post             |
| 5/8" x 3/32"      | 6063-T52 3/8 sch.40-P | Cable Sleeve Tube        |
| 3/16" Dia.        | 316 S.S. 1 x 19       | Cable (Recommended)      |
| 3/16" Dia.        | 316 S.S. 7 x 7        | Cable ( Option )         |
| 1-1/2"x 3/4"x1/8" | 6063-T52 Rect. Tube   | Horizontal Rail ( Btm. ) |
| 1/2" Thick        | 6061-T6 CNC Cut       | Post Base Doubler        |
| 1/2" Thick        | 6061-T6 CNC Cut       | Base Plates ( Option )   |



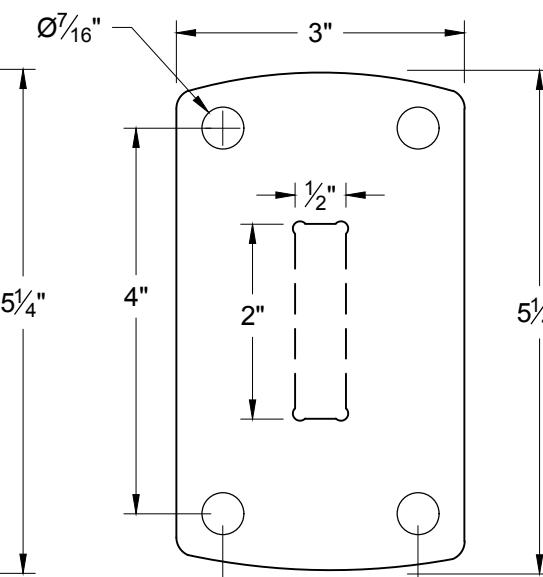
BASE PLATE ELEV. ( End )



BASE PLATE ELEV. ( Mid )



BASE PLATE PLAN ( End )



BASE PLATE PLAN ( Mid )

( BASE PLATE OPTION SUBJECT TO ENGINEERING )

Dimensions and Components may vary based on Site Specific Engineering

All rights reserved and are the property of Mullet's Aluminum Products, Inc. No part of the materials may be copied, photocopied, reproduced, translated or reduced to any electronic medium or machine-readable form, in whole or in part, without prior written consent of Mullet's Products, Inc. All materials are protected by United States Copyright Law.

Customer: **MULLET'S ALUMINUM**

Project Name: **RAILINGS**

Drawing Description: **CBRS - 300 Component List**

Date: May. 23, 19

Drawn By: Nick, L.

Scale: N.T.S.

Page: (3)



6345 McIntosh Road Office # ( 941 ) 371 - 3502  
Sarasota, FL 34238 Fax # ( 941 ) 378 - 5676